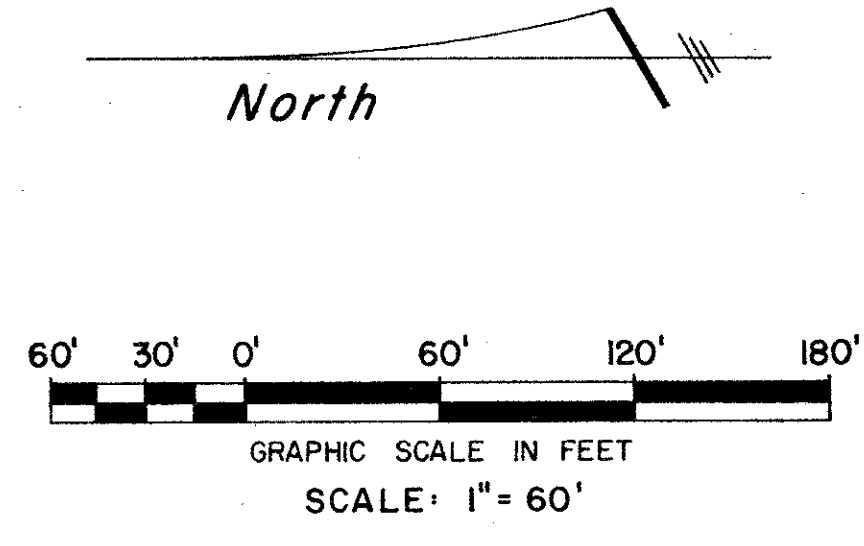
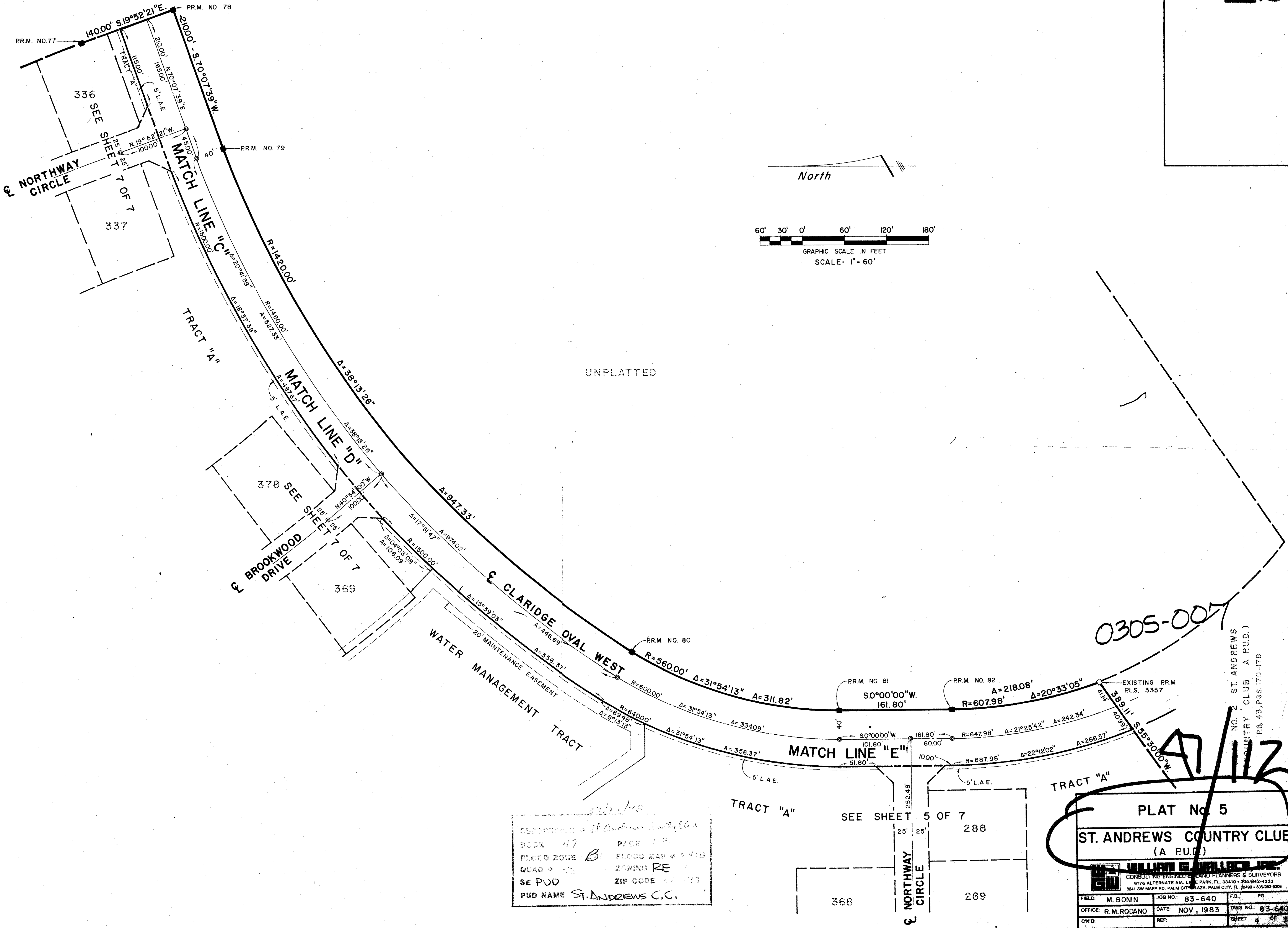


47/112



SUBDIVISION *St. Andrews Country Club*  
 BOOK 47 PAGE 12  
 FLOOD ZONE - B FLOOD MAP # 2410  
 QUAD # 25 ZONING RE  
 SE PUD ZIP CODE 33411  
 PUD NAME *St. Andrews C.C.*

PLAT No 5  
**ST. ANDREWS COUNTRY CLUB**  
 (A P.U.D.)

**WILLIAM E. WALLACE, INC.**  
 CONSULTING ENGINEERS, LAND PLANNERS & SURVEYORS  
 9176 ALTERNATE AVE. LEE PARK, FL 33410 • 305/842-4233  
 3241 SW MAPPLE RD. PALM CITY, FL 32909 • 305/283-0208

FIELD: M. BONIN	JOB NO.: 83-640	F.B.:	PQ.
OFFICE: R.M. RODANO	DATE: NOV., 1983	DWG. NO.: 83-640	
CKD:	REF:	SHEET 4	OF 5

0305-007

47/112

NO. 2 ST. ANDREWS  
 COUNTRY CLUB (A P.U.D.)  
 P.B. 43, PGS. 170-178